

SB SIMPSON

INDUSTRIAL SUPPLIES

www.sbsimpson.com

1-855-SIMPSON



FALL PROTECTION

We Are Here To Help With Workplace Fall Protection and Prevention Solutions!



3M | Fall Protection

DBI-SALA® ExoFit™ X300 Harness

Revolving Torso Adapters help to adjust harness fit with ease and speed, and lock webbing into place to maintain a comfortable and safe harness fit.

- Anti-sliding dorsal D-ring pad.
- Integrated easy-link SRL adapter
- Auto-locking and Quick connect: Chest & Leg Buckles
- Weight capacity 310lb.

Sizes: Small - 2X-Large

\$499



Pre-packaged Fall Protection Compliance Kit

Kit Includes: HiViz Harness: 3-point Adjustment/ Dorsal D-Ring/ Lanyard Keeper. Pass-thru, 2 Ft. Energy Absorber with attached Rope Grab. 50 Ft Rope Lifeline with Snap Hook. Reusable Roof Anchorage Connector.

SB#80-05590

\$149

WE OFFER Fall Protection Annual Inspections! CALL US TODAY TO BOOK



FULL BODY SAFETY HARNESSSES



Fall Protection



Authorized Distributor



Delta™ Universal Vest-Style

No-tangle design. Stand-up back D-ring. Tongue buckle leg straps. Repel webbing. Built-in lanyard keepers. Revolver™ vertical torso adjusters for simple and fast adjustments that lock into place. Impact Indicator.

#1102000C SB#80-06790

\$189⁹⁹



Protecta™ P50 Vest-Style

Pass-Through Chest Connection Fixed D-ring reduces the need for readjustment throughout the workday. Modern design gives harness a fresh and sleek look. Auto-resetting lanyard keepers for fast and easy parking of snap hooks and carabiners

Order#	Part#	Leg Connect	Price\$
80-06230	1161542C	Tongue-Buckle	90.83
80-05659	1161571C	Pass-Thru	84.95



DBI-SALA® ExoFit™ X100 Comfort Vest-Style

- Equipped with anti-sliding dorsal D-ring pad to help greatly reduce dorsal D-ring slide
- Integrated SRL adapter helps quickly and easily connect and disconnect.
- Low-profile suspension trauma strap design integrated between harness webbing
- Pass-thru chest connection.
- Weight capacity 310lb.

Small to 2X- Large #1401000C - 1401003C

\$256¹⁸

DBI-SALA® Nano-Lok™ Edge Personal Self-Retracting Lifeline

Designed for 2ft foot-level tie-off and leading edge applications. Quick activating speed sensing brake system. Durable thermoplastic housing. Built-in connector for direct attachment to harness. High capacity external energy absorber and impact indicator. RFID equipped and compatible with inventory management system

Galvanized Cable, 8 ft (2.4 m)
#3500218 SB#80-08945



Order#	Part#	Snap Hook Ends	Price\$
80-08945	3500218	Swivel, Standard small snap	398.40
80-11524	3500219	Stationary, Steel rebar hook	405.06

DBI-SALA® Nano-Lok™ Edge Twin Leg Self-Retracting Lifeline

Designed for foot-level tie-off and sharp edge applications. Twin-leg 100% tie-off design. Built-in connector for twin-leg SRL direct attachment to harness. Swiveling anchorage loops. Quick activating speed-sensing brake system. Integrated backpack style energy absorber. Quick connect, 8 ft (2.4 m) 3/16 in (5 mm) galvanized steel cable.

#3500234 SB#80-08846



\$705³⁰

DBI-SALA® Nano-Lok™ Self-Retracting Lifeline

Swiveling anchorage loop with carabiner. Quick activating speed sensing brake system. Self-locking snap hook on lifeline. Durable thermoplastic housing. High capacity external energy absorber and impact indicator. RFID equipped and compatible with inventory management system.

Single-leg, Web, 6 ft. (1.8m)

#3101245 SB#80-08290



Protecta® PRO™ Adjustable & Positioning Shock Absorbing Lanyards

Order#	Part#	Description	Price\$
80-06770	1385101C	6' Single leg with snap hook ends	69.75
80-05458	1385301C	Adjustable 6' Single leg w/Snap hook ends	78.98
80-05772	1340125C	E4 6', Single leg, Snap hook end, Rebar hook end, Shock Absorb	119.96
80-07898	1342275C	6' Double leg, Adjustable Shock Absorb, Rebar hook ends	207.46

\$198⁹⁵

Suspension Trauma Safety Straps

Attach to most harnesses to help provide comfort and help prevent suspension trauma. Allows user to stand in harness after a fall. Continuous loop design. Fast and easy installation. Extremely compact and lightweight design. 420lbs capacity. #9501403C SB#80-04423



Prevent effects of suspension trauma after fall!

\$36⁴⁹



Fall Protection



Authorized Distributor

Suspension Trauma Safety Straps FR Rated Version

1.5 ft (0.5 m) D-Ring extension. Extends dorsal harness D-Ring (or overhead anchor point). Abrasion-resistant polyester webbing. Self-locking snap hook. High-strength D-Ring tie-off point. 310lbs capacity. #9505712 SB#80-11523

\$82²⁹

Circuit Breaker Gloves

Smooth full-grain cowhide leather stitched with Kevlar® thread. Pulse protector. Extra wide thumb strap. 3-finger back with winged thumb. Snug-fitting shirred elastic wrist 5 1/2" reflective gauntlet cuff.

#3777 Medium to XLarge

\$17³⁵/pr



Fall Protection Accessories

Order#	Part#	Description	Price\$
80-05781	2104000	Reusable Hinged Roof Anchor	48.79
80-08292	2101634	D-Ring Anchorage plate	73.20
80-05764	1003000C	3 ft Tie-Off Adaptor	73.20
80-05765	1003006C	6 ft Tie-Off Adaptor	85.10
80-05783	SSR100-50	50' Self-Locking Lifeline Rope	162.56
80-05780	AC202C-SA2	Rope Grab w/2' Absorbing Lanyard	239.43
80-07899	AC202C-SA3	Rope Grab w/2.5' Absorbing Lanyard	245.33
80-05782	SSR100-150	150' Self Locking Lifeline Rope	334.49



Shock Absorbing Lanyards

SP (Shock Pack) lanyards are comprised of "tear webbing" which is woven in a manner that allows the webbing to tear when it has a load applied to it. This tearing absorbs a significant amount of downward force under load, reducing injury. Certified to CSA Z259.11-17 standards.

Order#	Part#	Description	Price\$
80-08827	V8104606	6', Single, Snap hooks (110-220lb cap.)	74.69
80-08828	V8104706	6', Single, Snap hooks (200-350lb cap.)	105.31



Leading Edge (LE) Self-Retracting Lifelines

Designed to protect the worker when operating near an edge and where a fall hazard exists that could cause the lifeline to come into contact with the edge. 310 lb (136 kg) capacity. Certified to the newest CSA Z259.2.2-2017 standard and ANSI Z359.14-2014

Order#	Part#	Description	Price\$
80-08823	V845622006LE	6' - Single, Snap & Pack	276.19
80-11509	V845626006LE	6' Twin Leg AL Form Hooks and Pack	639.72



Confined Space Kit

- Adjustable/locking legs, for the right fit for your applications
 - Non-slip rubber safety feet
 - Safety chain and 2 attachment points on the steel head
 - Available in 7' (2 m)
 - SRL mounting fixture installed prior to shipping
 - V84537065 (MW-65G) winch using back plate and 4 bolts (carabiner & split pulley included)
 - Meets or exceeds CSA and OSHA requirements for confined space rescue
 - 4:1 mechanical advantage makes rescue quick and easy, with an average retrieval speed of 25' (7.6 m) per minute
 - Corrosion-resistant stainless steel and aluminum components
- Includes: Tripod, Self-Retracting Lifeline, Man Winch, Carrying Bag
#V85026 SB#80-11510

\$5,299⁹⁹

Lightweight and portable, take it with you from job to job!

Saving you time and money. Single-person setup.





FULL BODY SAFETY HARNESSSES



NEW - COMING SOON



Flyer Pro

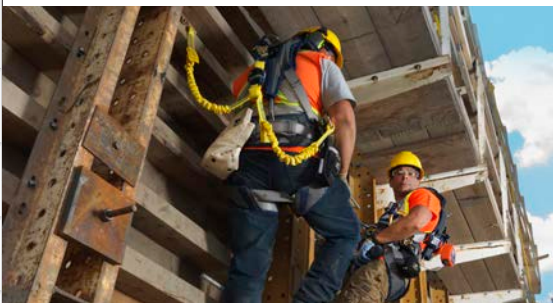
PES Webbing 45mm water repellent
 Aluminum alloy D-ring at:
 front/back/ventral/sides
 Comfort padding - Lite - Air - Reflective
 Seat connection points
 4 aluminum lzy buckle, 5 steel bar buckles,
 9 adjustment points, 5 tool holder points
 Lanyard parking attachment.
 Fall Indicator - Legs
 Series #FS243.2IP

Flash Comfort

PES Webbing 45mm water repellent
 Aluminum alloy D-ring at front/back/sides
 Comfort padding - Lite - Air - Reflective
 Seat connection points
 4 aluminum lzy buckle, 2 aluminium spring
 buckles, 2 bar buckles, 8 adjustment points,
 2 tool holder points
 Lanyard parking attachment.
 Fall Indicator - Back
 Series #FS240ICD

Flex Comfort

PES Webbing 45mm water repellent
 Aluminum alloy D-ring at front/back
 Comfort padding - Lite - Air - Reflective
 Seat connection points
 3 aluminum lzy buckle, 2 aluminum spring
 buckles, 4 adjustment points, 4 tool holder
 points
 Lanyard parking attachment.
 Fall Indicator - Back
 Series #FS242ICD



3M™ Trade-in & Trade-up Program

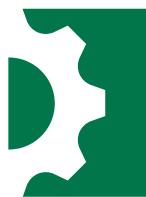
This program allows you to exchange eligible
 Fall protection equipment and receive cash rebates.
 A Win-Win Situation!

Contact Us Today for more information

SB Simpson can supply all brands of Fall Arrest Safety Protection



For More Resources To Keep You Safe! Visit: www.sbsimpson.com



SB SIMPSON

INDUSTRIAL SUPPLIES

BURLINGTON	Ph: 905.335-6575	OWEN SOUND	Ph: 519.371.2402
BRAMPTON	Ph: 905.459.1312	PETERBOROUGH	Ph: 705.742.4206
OSHAWA	Ph: 905.723.1151	STRATFORD	Ph: 519.273.0822

Prices subject to change. We reserve the right to correct pricing errors. Products may not be exactly as shown. Quantities are limited.
 We reserve the right to substitute products of equal value. All applicable taxes extra.
 Freight may apply on chemicals, large and heavy items. Delivery charges may apply if outside our service area.

1-855-SIMPSON (746-7766)

Expires: September 2025

www.sbsimpson.com