

SB SIMPSON

INDUSTRIAL SUPPLIES

www.sbsimpson.com

1-855-SIMPSON



WORKING AT HEIGHTS

Fall Protection You Can Trust



Pre-packaged Fall Protection Compliance Kit

Kit Includes: HiViz Harness: 3-point Adjustment/ Dorsal D-Ring/ Lanyard Keeper. 2 Ft. Energy Absorber with attached Rope Grab. 50 Ft Rope Lifeline with Snap Hook. Reusable Roof Anchor Connector. **SB#80-05590**

\$145⁰⁰

DuPont™ Tyvek® Harness Protection Coveralls

Multiple access points to the full-body harness (worn underneath the garment) through four elasticized D-Ring sleeves. 3-piece hood. Stitched seams. Elasticated wrists, ankles, waist, and hood. Thumb loops made of Tyvek® fabric. Pin lock slider zipper pull. White. Sizes Medium - 3XLarge. #TY178S 500HP

\$15²⁵



Workers operating with a full-body harness in environments where hazardous particle or light liquid aerosol hazards are present.



Traverse™ Climbing Helmet

Vented, with Mips® Brain Protection System for Industrial Safety Helmets, ABS Shell, EPS Foam Impact Liner, HDPE Suspension, Wheel Ratchet Adjustment and 4-Point Chin Strap.

#HP1491RVM-01 White SB#80-11879

More colours available

\$95⁸⁸

WE OFFER Fall Protection Annual Inspections! CALL US TODAY TO BOOK



Fall Protection



Authorized Distributor



FULL BODY SAFETY HARNESSES



Entry Level Vest-Style Positioning Universal

Entry Level Vest-Style harness is a 5-point vest-style safety harness designed to provide a full fall protection system for any wearer. Back D-ring. Parachute torso adjusters. Durable polyester web construction.

Order#	Part#	Leg Connection	Price\$
80-08296	AB17530C	Pass-thru	59.00
80-11855	AB17550C	Tongue-Buckle	79.00



Standard Vest-Style

Fixed Back D-ring, Pass-Through Chest Connection Tongue-buckle leg

Order#	Part#	Size	Price\$
80-06230	1161542C	Medium/Large	96.67
80-05888	1161543MC	XLarge	96.67



Vest-Style

Features padding to help keep workers comfortable in even the harshest environments. The polyester web construction and comfort padding helps make this harness lightweight and comfortable for longer wear. Back D-ring, Pass-Through Leg and Chest Connection.

Order#	Part#	Size	Price\$
80-05659	1161571C	Medium/Large	89.00
80-06232	1161572C	XLarge	89.00
80-07896	1161573C	2XL	94.00

Comfort Construction-Style

Fixed D-Ring, Back Pad with U-Shaped Neck, Ez-Link SRL Adapter, Soft hip pad. Auto-resetting lanyard keepers, Impact Indicators. #1161205C Med/Large SB#80-06509

\$165⁰⁰



Comfort Vest-Style

Parachute torso adjusters. Polyester web Quick-connect Leg Connection. Auto-resetting lanyard keepers for fast and easy parking of snap hooks and carabiners. Impact indicators make it easy to inspect the harness for prior damaging impact loads.

#1161427C Med/Large SB#80-05629

\$165²⁹



P200 Comfort Construction Positioning Vest-Style

Designed to help provide industrial workers with optimal comfort and support, including features such as a web pSRL adapter for attachment of personal self-retracting lifelines (pSRLs). Features built-in lanyard keepers to reduce the potential for accidental entanglements, ensuring workers with reliable fall protection. Back/Side D-rings, Pass-Through Leg and Chest Connection.

#1161207MC XLarge SB#80-08843

\$169⁸⁹



P200 Vest Retrieval

Feature padding to help keep workers comfortable in even the harshest environments. Polyester web construction and comfort padding helps make this harness lightweight and comfortable for longer wear. Back/Shoulder D-rings, Tongue-buckle leg, Pass-Through Chest Connection.

#1161550MC Med/Large SB#80-08849

\$125²¹



Fall Protection



Authorized Distributor



FULL BODY SAFETY HARNESSSES

Delta™ Safety Harnesses

are recognized by their bright yellow webbing and patented triangular no-tangle back pad design.

Order#	Part#	Buckle-Style	Price\$
80-06790	1102000C	Tongue buckle	212.54
80-08822	1110600C	Tech-Lite™ Quick Connection	256.55



Delta™ Universal Vest-Style

- Automatic stand-up back D-ring enables efficient dorsal connections
- Revolving torso adjuster buckles available on select models
- Available in multiple styles, configurations, and leg and chest connection options
- Integrated suspension trauma straps included on most models
- Equipped with auto-resetting lanyard keepers for fast and easy parking of snap hooks and carabiners
- Protected labels, equipped with 3M™ Connected Safety ID (CSID)
- Impact Indicator
- Harness meets CSA Z259.10 requirements
- Heavy duty zipper
- Internal mesh lining
- Built-in pockets

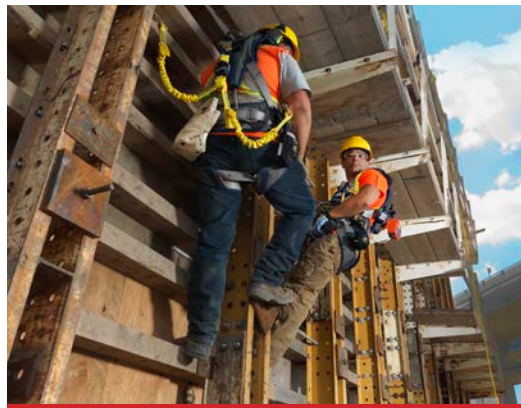


DBI-SALA® ExoFit™ X100 Comfort Vest-Style

- Equipped with anti-sliding dorsal D-ring pad to help greatly reduce dorsal D-ring slide
- Integrated SRL adapter helps quickly and easily connect and disconnect
- Low-profile suspension trauma strap design integrated between harness webbing
- Pass-thru chest connection.
- Weight capacity 310lb.

Small to 2X- Large
#1401000C - 1401004C

\$284⁰⁰



TRADE IN AND TRADE UP

Trade up to get rebates on high-quality 3M™ DBI-SALA® and 3M™ Protecta® Fall Protection products.

End-user are eligible to receive a manufacturer's rebate when they TRADE IN (i.e., permanently take out of service) competitive* fall protection equipment and replace with comparable** qualifying 3M FALL PROTECTION products purchased between January 1, 2026 and December 31, 2026

Harnesses can be designed for general use, and many applications, or may be specialized for specific uses within different industries. Our harnesses are thoughtfully designed to provide comfort, freedom of movement, ease of use, lumbar support, positioning rings and tool carrying options.



DBI-SALA® ExoFit™ X300 Comfort Vest Climbing Positioning

Revolving Torso Adapters help to adjust harness fit with ease and speed, and lock webbing into place to maintain a comfortable and safe harness fit.

- Anti-sliding dorsal D-ring pad.
- Integrated easy-link SRL adapter
- Auto-locking and Quick connect: Chest & Leg Buckles
- Weight capacity 310lb.

Sizes: Small - 2X-Large
#1113076C-1113088C

\$554⁰⁰



Fall Protection



Authorized Distributor



Protecta® PRO™ Vest-Style Harness Hot Work

Kevlar® fiber webbing, tongue buckle legs. Built-in lanyard keepers to reduce the potential for accidental entanglements, ensuring workers with reliable fall protection. Feature padding to help keep workers comfortable in even the harshest environments. The polyester web construction and comfort padding helps make this harness lightweight and comfortable for longer wear.



Back D-ring

Order#	Part#	Size
80-10055	1191383C	Med/Large
80-10056	1191384C	XLarge

\$177

Positioning Back And Side D-rings

Order#	Part#	Size
80-10045	1191385C	Med/Large
80-10057	1191386C	XLarge

\$185

Harnesses For Hot Work Use!

Protecta® Rebel™ Leading Edge Self-Retracting Lifeline

Swiveling anchorage connector loop
Aluminum or thermoplastic housing design
Self-locking snap hook on lifeline
Quick activating speed-sensing locking system
Features impact-indicating external energy absorber (for models with external shock pack)
Corrosion resistant components

Order#	Part#	Length	Price\$
80-08833	3590544	33'	1,006.00
80-08293	3590547	50'	1,196.00



DBI-SALA® Nano-Lok™ edge Self-Retracting Lifeline

The Nano-Lok™ edge SRL is specifically designed for foot level tie-off and sharp edge applications. It uses an innovative combination of lifeline material, energy absorption, and its harness connection to reduce forces on both the wearer and the edge. The 8 ft. (2.4 m) of 3/16 in. (5 mm) cable provides maximum range of motion, durability, and cut resistance.

Order#	Part#	Single-Leg	Price\$
80-08374	3500217	Steel snap hook	425.00
80-08945	3500218	Steel Swivel snap hook	442.00
80-11524	3500219	Steel rebar lock hook	449.00



Protecta® Rebel™ Self Retracting Lifeline 50 ft Cable

#3590552 #80-11506

\$954



DBI-SALA® Nano-Lok™ Edge Twin-Leg Self-Retracting Lifeline

Steel rebar lock hook
#3500234 SB#80-08846

\$781



DBI-SALA® Nano-Lok™ Self-Retracting Lifeline with Anchor Hook

Swiveling anchorage loop with carabiner. Quick activating speed sensing brake system. Self-locking snap hook on lifeline. Durable thermoplastic housing. High capacity external energy absorber and impact indicator. RFID equipped and compatible with inventory management system. Single-leg, Web, 6 ft. (1.8m)
#3101245 SB#80-08290

\$219





Fall Protection



Authorized Distributor



Tie-Off Adaptor

Anchorage are sold by what they connect to (general/all purpose, steel, concrete, roof or specialty), whether they are fixed or mobile, and whether they are permanent or portable. They all must provide a secure point of attachment for a complete personal fall arrest system.

Order#	Part#	Length	Price\$
80-05764	1003000C	3 ft	81.19
80-05765	1003006C	6 ft	94.42



Protecta® Positioning Lanyards

Order#	Part#	Description	Price\$
80-06770	1385101C	6' Single leg with snap hook ends	73.87
80-05458	1385301C	Adjustable 6' Single leg w/Snap hook ends	82.99

Protecta® PRO™ Shock Absorbing Adjustable & Positioning Lanyards

Order#	Part#	Description	Price\$
80-06048	1341004C	4', Single leg, Snap hook end	94.82
80-05772	1340125C	6', Single leg, Snap hook end, Rebar hook end	127.65
80-06046	1341001C	6', Single leg, Snap hook end, Rebar hook end	93.46
80-05774	1340180C	6' Double leg, Snap hook ends	186.00
80-07898	1342275C	6', Double leg, Adjustable, Rebar hook ends	219.75



DBI-SALA® Adjustable Web Positioning Lanyard

6 ft. (1.8m) single-leg lanyard. Ideal for work positioning or restraint. Abrasion resistant polyester webbing. Built-in wear indicator. self-locking snap hook ends.

Order#	Part#	Description	Price\$
80-08851	1231016C	Adjustable, Snap hook ends	132.74
80-08297	1231106C	Snap hook ends	154.84

Suspension Trauma Safety Straps

Attach to most harnesses to help provide comfort and help prevent suspension trauma. Allows user to stand in harness after a fall. Continuous loop design. Fast and easy installation. Extremely compact and lightweight design. 420lbs capacity. #9501403C SB#80-04423

\$39⁹²



Prevent effects of suspension trauma after fall!

D-Ring Anchorage Plate

High strength construction
Compact and lightweight design
Rugged and corrosion resistant
0.25" x 2" x 4.5"

#2101634 SB#80-08292

\$81¹⁹



Self-Locking Lifeline Rope

- Provides freedom of movement operation
- Detachable
- Brake locks rope grab onto lifeline in case of a fall

#SSR100-50 SB#80-05783

\$216⁵⁹



Rope Grab with 2.5' Absorbing Lanyard

Energy absorbing design reduces fall arrest forces

#AC202C-SA3 SB#80-07899

\$260⁷⁹





Economical Entry Level

Dyna-Lite™ Universal Harness

with 5 points of adjustment, 1 back D-ring, friction pass through chest hardware, Grommet leg connectors, Rated for 400lbs.

#FP2601DGU SB#80-10755

\$58²⁰



Miller® Titan™ II Contractors Harness

Non-Stretch with Hi-Viz Webbing, 5 Points Adjustment, with Back D-Ring, and Mating Chest Buckles & Tongue Leg Buckles.

#T4507/UAU SB#80-06504

\$123⁶⁷



Miller® H500 Construction Comfort Harness

Ergonomically designed pressure-relief paddings for more comfort and freedom of movement Universal with 5 Points of Adjustment, with Back / Front D-Rings, and Belt, and Quick-Connect Chest & Leg Buckles

#H5ISP221002 SB#80-11880

\$138⁹⁸

Dyna-I™ Vest-Style Harness

Traditional H-Style Full Body Harness with 5 Points of Adjustment Lightweight. Adjustable shoulder straps. 1 large back D-Ring plus 2 side D-Rings for work positioning. Pass-thru quick connect leg strap buckles.

#FP2003DXL SB#80-11881

\$182⁰⁰



Dynamic™ Chain Assembly Positioning Lanyard

Large snaps, 22"

#FP675113 SB#80-11883

\$131⁹⁶



Self-retracting Lifelines

Auto-locking, specially designed for anchoring above and below the user's D-ring and approved for foot level tie off. Swivel anchor point with carabiner included. External energy absorber. Rated for 59 to 141 kg / 130 to 310 lbs

Order#	Part#	Size	Price\$
80-10754	FP2YY20CLE	20'	638.00
80-11001	FP2YY50CLE	50'	869.00



Dyna-Lite™ Fixed Lanyard

Polyester Double-Leg Fixed Y-Lanyard with Energy Absorber, Small Snap Hook and Two Large Snap Hooks, CSA certified Fixed lengths of 4' or 6' 58 kg (130 lb) to 140 kg (310 lb) Single: 2 Snap Hooks ends

Order#	Part#	Length/Leg	Price\$
80-10760	FPY73311/6	6' Single leg	65.00
80-10761	FPY736144/4	4' Double leg	148.00
80-10762	FPY736144/6	6' Double leg	148.00



StretchStop® SofStop® 6' Single Leg Lanyard

StretchStop® technology features a tubular stretch design, which allows for enhanced flexibility and reduced bulk. SofStop energy absorber minimizes fall forces. Locking Snap Hook Leg Ends

Order#	Part#	Price\$
80-08527	M1FSFS-TS6C Locking Snap Hook Center	147.00
80-10081	M1FSFR-TS6C Locking Rebar Hook Center	156.00

Self-Retracting Lifeline

Polyester webbing to keep the devices light and provides high strength and great durability. CSA Class SRL, with Triple Action Carabiner and Small Snap Hook - 7' (2.1m)

#FP1102W SB#80-09854

\$183¹⁹



Cable 3-Way Self-Retracting Lifeline

with Retrieval, Integrated Retrieval winch 3 Ways (SRL) which allows lowering and raising CSA Class SRL-R - 50' (15m)

#FP3AA15CR SB#80-11882

\$1,622



50' Rope Lifeline with Snap Hook

5/8 in (16 mm) 3-strand polyester rope. 1 termination. 1 snap hook with 3/4" opening

#FP16EPS50A SB#80-10757

\$87⁷⁹



Reusable Roof Anchor

Reusable. Temporary. Includes 10 screws.

#FP09R SB#80-09856

\$24⁵³



WILLIAMS



An ENGINEERED, TESTED, and CERTIFIED Tethered Tool System for Applications Involving Work at Height

Reduce the time, effort and complexity associated with installing universal attachment points



5 PC Rotating Screwdriver Tabs Set

Located for secure retention allowing full use of the screwdriver handle. Corrosion resistant stainless steel tab rotates freely 360° so the lanyard does not wrap around the user's hand. Nylon bushing has a shoulder, so the tab will not bind between the handle and shank bolster.

#100P-5MD-TH SB#32-08192

\$293



Sliding Combination Wrench Safety Coils

Slides out of the way along the wrenches handle to provide full use and achieve the greatest leverage. Superior design with high performance polished stainless steel for superior flexibility and shock absorbing qualities, plus no welds to fail.

#JHW1216SC-TH SB#32-08196

\$56⁶⁹

1/2" Drive Ratchet

Enclosed head is sealed to prevent dust, dirt, and liquids from entering head, preserving internal lubrication. Forged one-piece ratchet provide strength and safety for industrial applications Chrome Finish 10-1/4 long, 36 teeth

#JHWS52EHATH SB#32-08193

\$124

Williams® Tools@Height™

Sockets, extensions & adaptors have 4 locking holes for ease of attachment. To release them, a release pin is required (which is meant to be tethered as well) so that the socket is in hand upon release to minimize the chance of dropping.

Release pin with
Pin Release Tool
for Williams® Square Drive Tools
#THPRTA SB#32-08198

\$42⁷⁴



7" Industrial Grade Linesman's Pliers

Induction hardened cutting edges stay sharp longer. Diamond serrated jaws provide solid grip on wire. Double-dipped plastic handle grips are comfortable yet durable.

#JHWPL204CTH SB#32-08195

\$65⁶⁷

More Tool Sizes Available

We offer a full line of Tools for Working At Heights

1-855-SIMPSON (746-7766)

www.sbsimpson.com



Fall Protection

Help make worksites safer and more productive by reducing falling object incidents that can result in personal injury, equipment damage and tool loss.

Clip2Clip Coil Tether
#1500059 SB#80-11889

\$20⁷⁹



Hook2Loop Bungee Tool Tether
#1500047 SB#80-06788

\$35¹⁵



Hook2Hook Coil Tether w/ Swivel
#1500159 SB#80-06787

\$43⁵⁹



Hard Hat Tether

designed with functional features to enable workers to secure tools for working at height.
#1500178 SB#80-06783

\$14³⁹



Adjustable Wristband W/Cord

#1500084 SB#80-11890

\$26⁹⁶



D-Ring Tool Attachment

with Cord 10 /PK
#1500009 SB#32-08194

\$76³⁹/pk



SB Simpson can supply all brands of Fall Arrest Safety Protection



For More Resources To Keep You Safe! Visit: www.sbsimpson.com



SB SIMPSON

INDUSTRIAL SUPPLIES

BURLINGTON	Ph: 905.335-6575	OWEN SOUND	Ph: 519.371.2402
BRAMPTON	Ph: 905.459.1312	PETERBOROUGH	Ph: 705.742.4206
OSHAWA	Ph: 905.723.1151	STRATFORD	Ph: 519.273.0822

We reserve the right to make changes without notice and accept no liabilities for print and pricing errors. Products may not be exactly as shown. Quantities are limited. We reserve the right to substitute products of equal value. All applicable taxes extra. Freight may apply. Delivery charges may apply if outside our service area.

Prices effective April 1, 2026

Prices subject to change without notice due to manufacturer increases or market conditions.

1-855-SIMPSON (746-7766)

www.sbsimpson.com